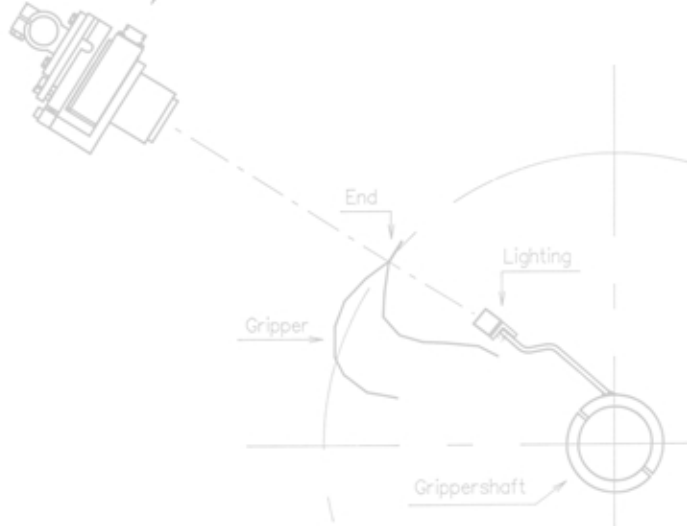


Line scan camera



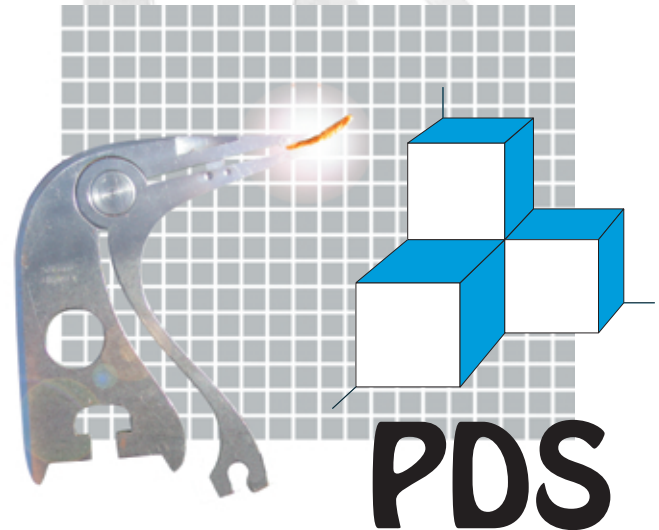
Since 1983 Matrix has developed and sold machine vision systems for the textile industry and particularly for the carpet industry. Vision systems are used for quality control and also as a part of machine control, cutting and folding machines.

**MATRIX**



Ingenieursbureau MATRIX b.v.  
Business and Science Park  
PO Box 758 - 7500 AT Enschede  
Capitool 46 - 7521 PL Enschede  
The Netherlands  
Tel +31 53 433 4335  
Fax +31 53 433 8211  
E-mail [info@matrix-ib.nl](mailto:info@matrix-ib.nl)  
[www.matrix-ib.nl](http://www.matrix-ib.nl)

**MATRIX**



**PDS**

End Out Detector



# PDS

The PDS end out detector detects missing ends during carpet manufacturing. All ends are inspected at any loom speed. The PDS system has been designed for Axminster gripper looms.

Line scan cameras inspecting the ends in all grippers perform the detection. A PDS can have up to six cameras. Each camera can inspect 252 grippers. A PDS can inspect at most 1512 grippers.



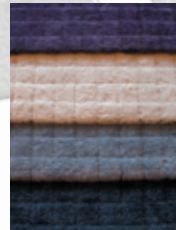
- Inspection and repair can be left out giving short pay back time.
- For more than ten years the PDS has proven to be very reliable.
- Pollution proof because of unique lighting system.
- Suited for any pitch.

Other system parts are an angular encoder fitted on the gripper shaft for detecting the measuring position and a special LED lighting strip.

The PDS can be set to ignore ends that are designed to be missing such as in round rugs. The required information can be received through a serial interface with the electronic jacquard.



	PDS-1	PDS-2	PDS-3	PDS-4	PDS-5	PDS-6
number of cameras	1	2	3	4	5	6
maximum number of grippers	252	504	756	1008	1260	1512
suited for any pitch						



**MATRIX** 